

Social value

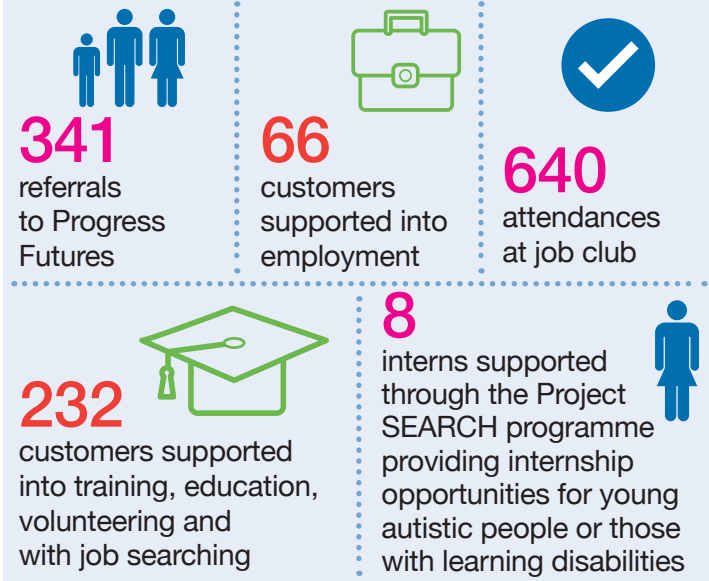
The information below shows what Progress Housing Group has achieved during the year as part of our commitment to social value.

Social value is important in demonstrating the difference we can make through the provision of services.

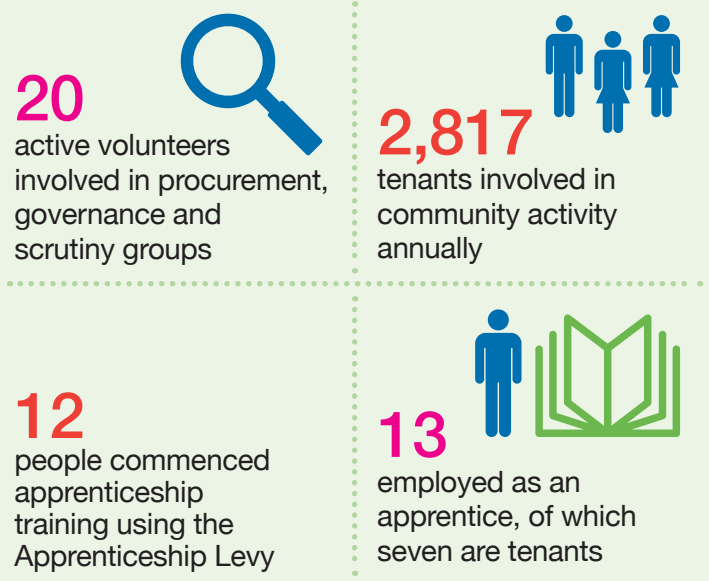
2022/23



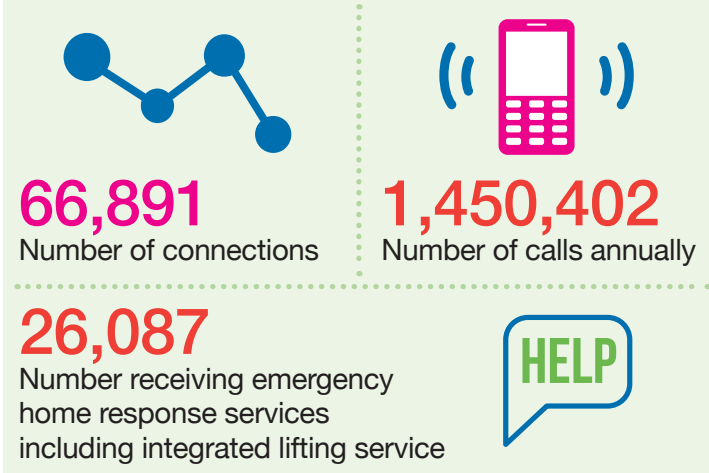
Progress Futures - our training and employment support service



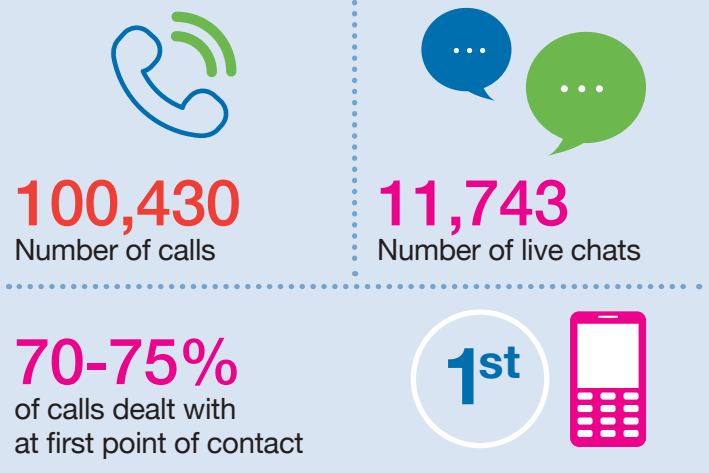
Customer Voice - involving tenants in shaping services



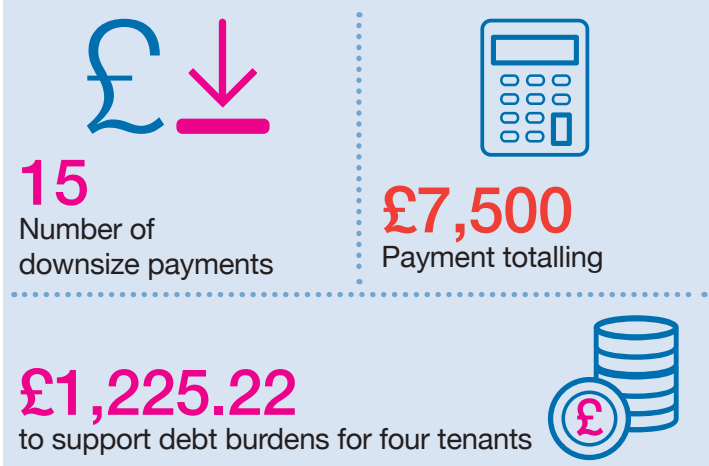
Progress Lifeline - our technology enabled care service to support independent living



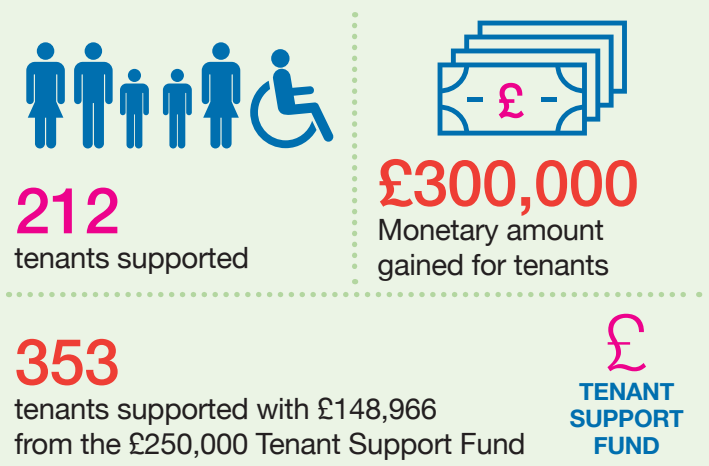
Managing customer enquiries



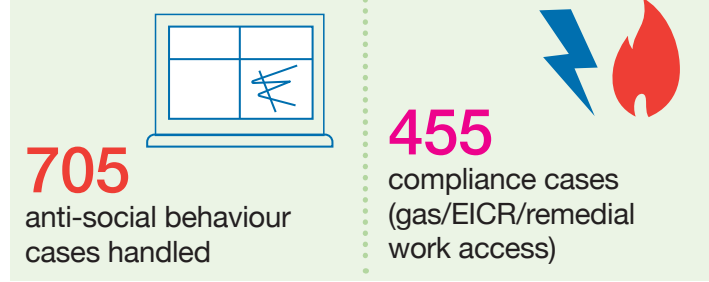
Supporting people to reduce the under-occupancy charge



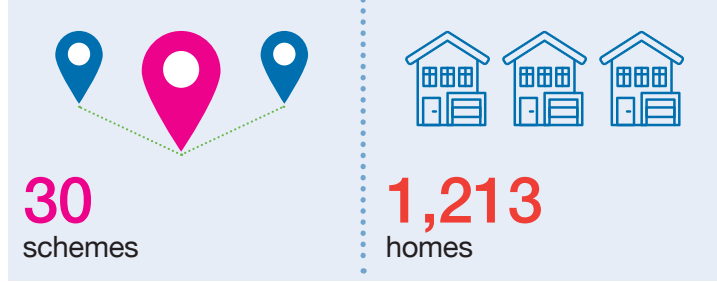
Financial inclusion, critical tenancy support and Tenant Support Fund



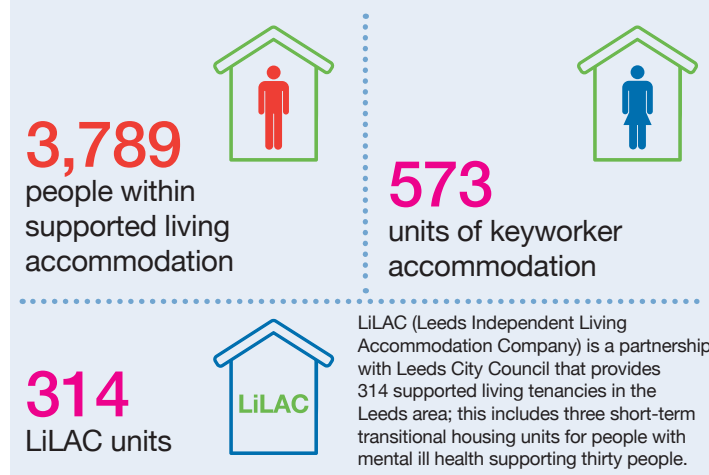
Keeping communities safe



Independent living for people over 55



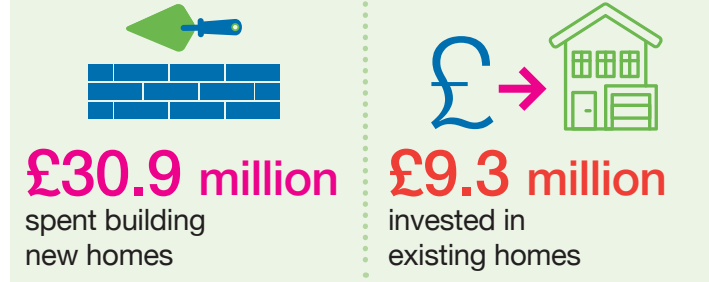
Our supported living homes for people with learning disabilities and/or autism



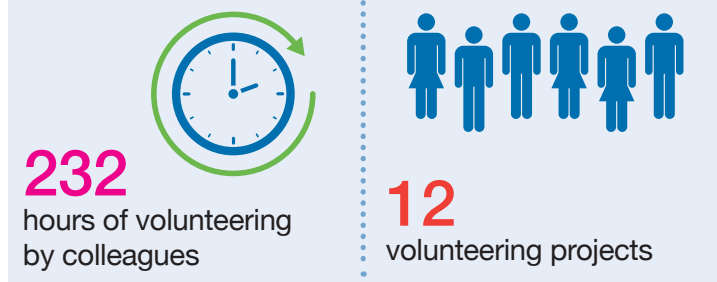
Support for people with a disability to remain in their home



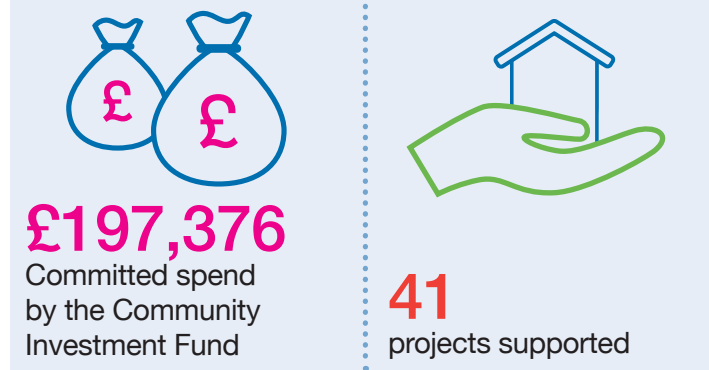
Investing in new and existing homes



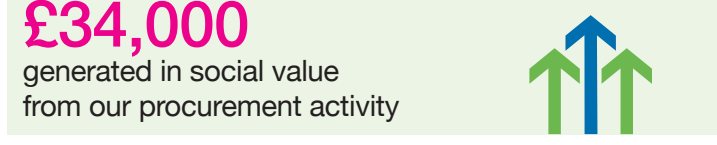
Volunteering



Investing in community projects



Working with suppliers



Keeping homes and communities safe

