

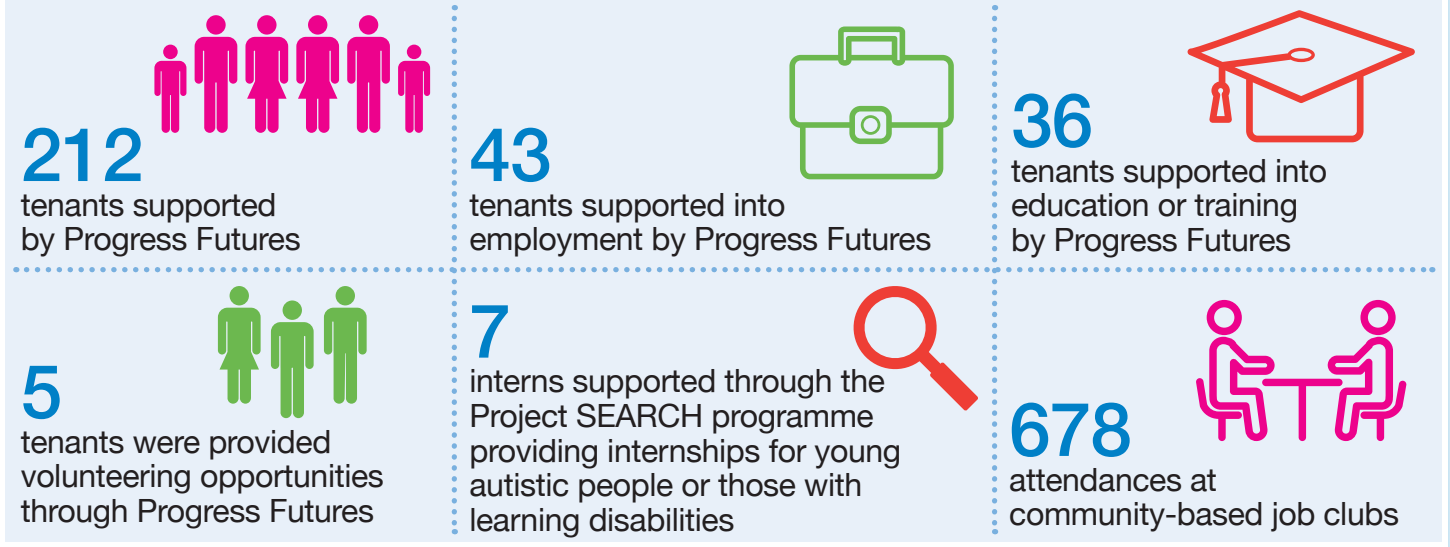
Social value
2024/25

The information below shows what Progress Housing Group has achieved during the year as part of our commitment to social value.

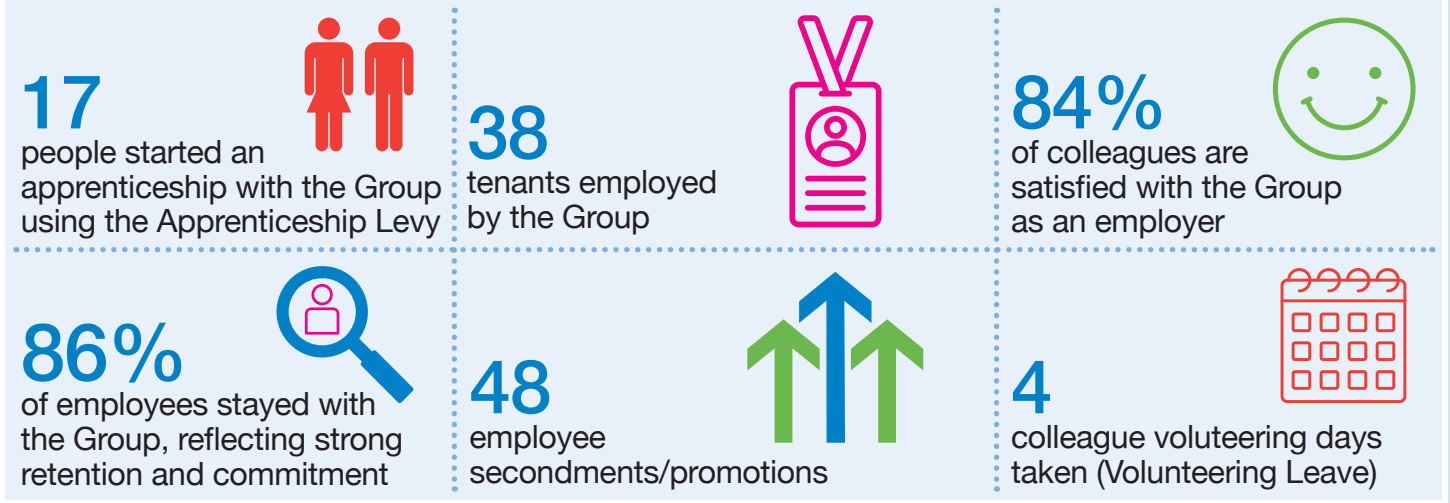
Social value is important in demonstrating the difference we can make through the provision of services.



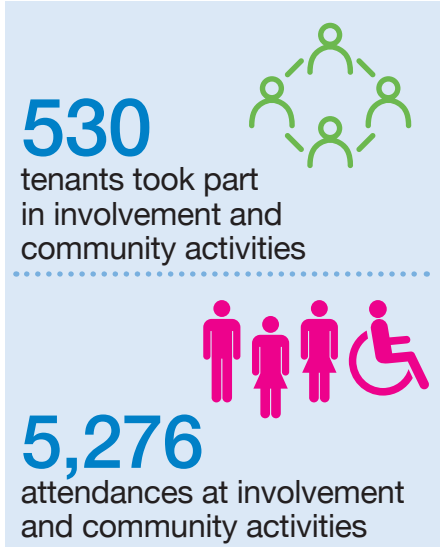
Progress Futures - our training and employment support service



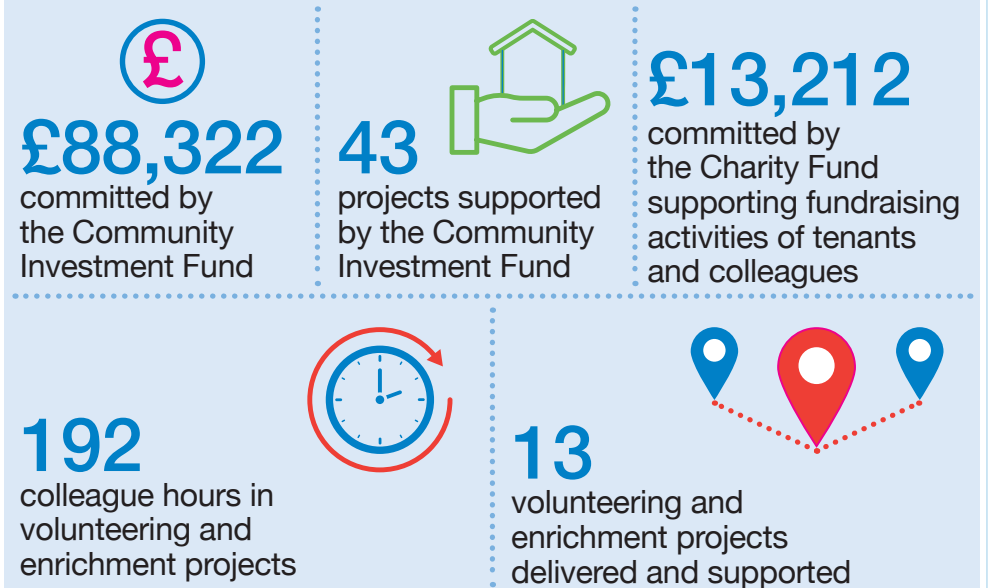
Investing in our employees



Customer voice - involving tenants in shaping services



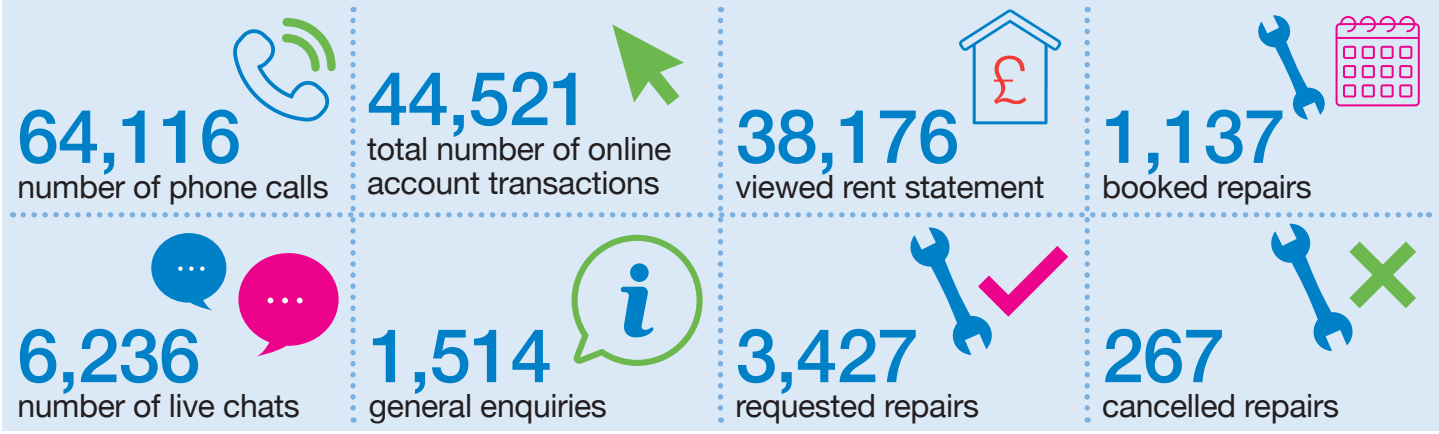
Investing in community projects



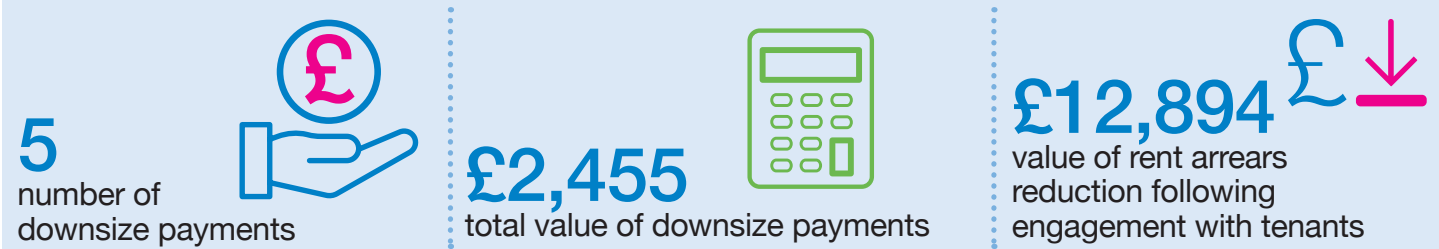
Progress Lifeline - our technology-enabled care service to support independent living



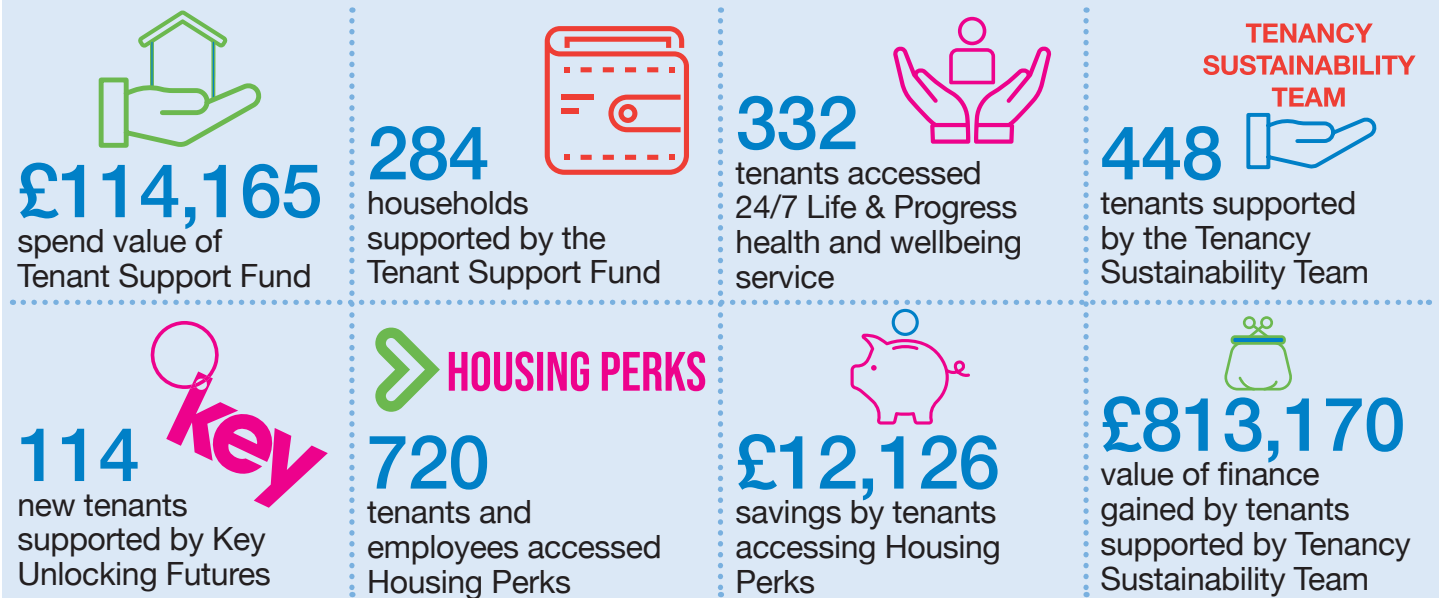
Managing customer enquiries



Supporting people to reduce the under-occupancy charge



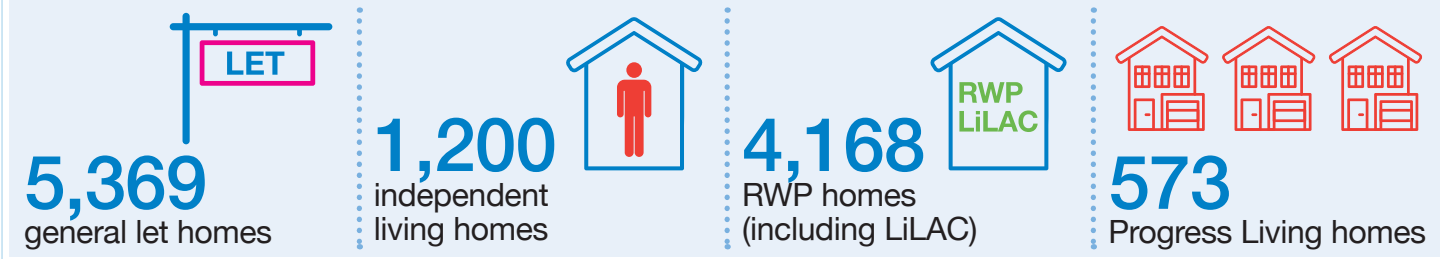
Tenancy sustainability



Keeping communities safe



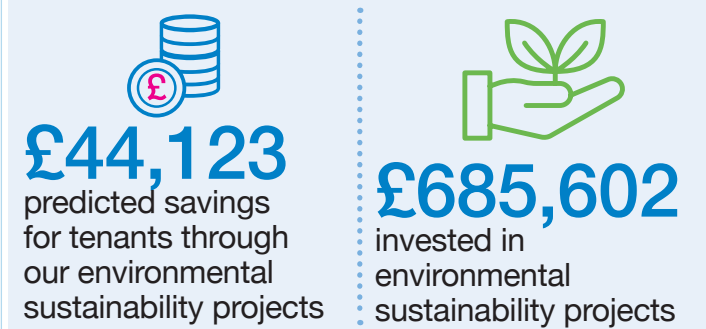
Our homes



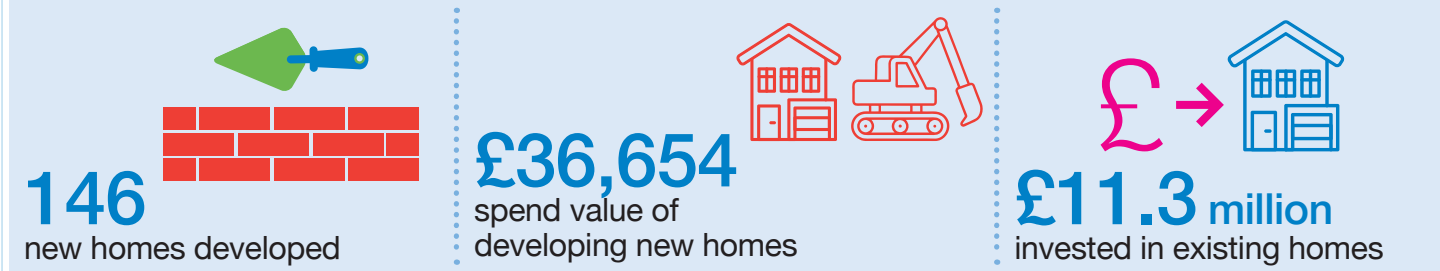
Support for people with a disability to remain in their home



Environmental sustainability



Investing in new and existing homes



Working with suppliers



Social impact communication campaigns

